

All because of you

YOUR YEAR IN REVIEW
2021/2022





Our mission is to prevent cruelty to animals by actively promoting their care and protection.



Royal Canin, Official National Nutritional Partner of the RSPCA

CONTENTS

RSPCA NSW mission statement	1
CEO and President letter	3
The year at a glance	5
Rescue and rehabilitation	7
Supporting communities	9
Preventing and prosecuting cruelty	11
Care and compassion	13
Advocacy	15
Next generation	17
Superstar supporters	19
Welfare is why	21

Cover Image: Rupert and Aster

We acknowledge the Traditional Owners of the land where we care for animals in need. We pay our respects to Elders past, present, and emerging. We celebrate the stories, culture, and traditions of Aboriginal and Torres Strait Islander Elders of all communities who continue to work and live on this land.



“Every day, RSPCA NSW works to protect the welfare of animals in our state, by providing care and preventing cruelty. Together our staff, volunteers, supporters, and animal-loving community share RSPCA NSW’s mission to help them, care for them, and advocate for them and protect them. We want to do everything in our power to make a tangible impact on vulnerable lives.”

– Steve Coleman, RSPCA NSW CEO

Wow, what a year. A year full of hurdles, challenges, and changes. COVID-19 and multiple flooding disasters have pushed our organisation to the limit. But we can’t let that slow us down.

Despite the challenges, RSPCA NSW still delivered on its promise to help people help animals. Over the 12 months, we cared for 17,691 animals in need and provided support, advice, and a helping hand to more than 200,000 people across the state.

Our inspectors covered hundreds of thousands of kilometres investigating animal cruelty, providing help to people who just needed some guidance, and prosecuting those who inflicted cruelty upon our animal friends.

Our programs team were the safe haven for thousands of people when they were experiencing hardship. From supporting victims of domestic violence to those experiencing homelessness, financial crisis or health challenges, the RSPCA was often the saving grace for these people and their pets in their hour of need.

Helping people help animals is the heart and soul of RSPCA NSW, and I am proud to say that we achieved that day in and day out this year. We continue to make progress every day in our fight against animal cruelty. This progress, along with every other story featured in this report, was fuelled by the incredible support the animal-lovers of NSW provide us daily. The support from people like you is the reason RSPCA NSW exists, and that is something that we never forget, we never take lightly, and we, always, always value.

Steve Coleman, RSPCA NSW CEO

Dr Peter Wright, President



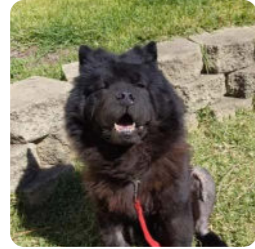
Image: RSPCA NSW Community Veterinarian, Dr Gemma Ma, and Outreach Officer, Kiana.

-  **6** RSPCA NSW SHELTERS
-  **2** BEHAVIOUR & REHABILITATION CENTRES
-  **3** VETERINARY HOSPITALS
-  **1** EDUCATION CENTRE
-  **1** CARE CENTRE
-  **40** PETBARN PARTNER LOCATIONS
-  **537** STAFF
-  **3,014** VOLUNTEERS



JULY

We commemorated 150 years of RSPCA in Australia by releasing a three-part mini series *Stories Behind the Scars*, which aims to shine a spotlight on the inherent humanity behind working in animal welfare.



AUGUST

In less than a day, our generous supporters donated \$9,500 to help Bear, a four-year-old Chow Chow, who was rescued from an intensive breeding facility. Bear had a ruptured cruciate ligament in both hind legs and needed urgent surgery to relieve his pain. Thanks to you, Bear had vital surgery and found a loving, forever home.



SEPTEMBER

90 incredible Kitten Protectors joined their monthly gifts to protect the 4,273 vulnerable kittens who came through our doors during kitten season.



OCTOBER

Our resilient shelters across the country celebrated with lots of tail wagging, as we reopened our doors after the pandemic. Despite the challenges, 498 animals found their forever home through our Adopt from Home initiative!



NOVEMBER

Our Community Outreach Team headed to Bidwell, Western Sydney, for their annual Healthy Pet Day. 82 people and 140 animals (89 dogs, 51 cats) received vital pet assistance, including 134 vaccinations, 65 microchips, 140 doses of parasite prevention, and 103 bags of food!



DECEMBER

Over the festive season, 8,428 Guardian Angels helped provide care and protection to animals in need by donating \$888,566.



JANUARY

With COVID case numbers increasing, our Education Team quickly switched our January School Holiday Program to a virtual format. 58 kids, ages five to 17, hopped online to learn about all creatures, great and small.



FEBRUARY

Continuing to fight for the voiceless, our Inspectorate convicted a breeder of animal cruelty offences concerning eight dogs bred and kept in a garage under a vet clinic.



MARCH

We helped over 500 people and pets affected by the devastating floods by providing emergency assistance at four evacuation centres, and distributing much-needed pet care at 14 RSPCA NSW Relief Points.



APRIL

Our new Adoption and Education Centre was officially opened by Premier Dominic Perrottet, the Hon Wendy Tuckerman MP, President RSPCA NSW, Peter Wright, and our CEO, Steve Coleman. Funded by the NSW Government and our generous supporters, our state-of-the-art centre will continue to prioritise animals' physical and emotional wellbeing.



MAY

Our first Million Paws Walk event in two years! 2,830 animal lovers and their pooches walked together to fight animal cruelty, \$418,000 was raised by 4,129 fundraisers.



JUNE

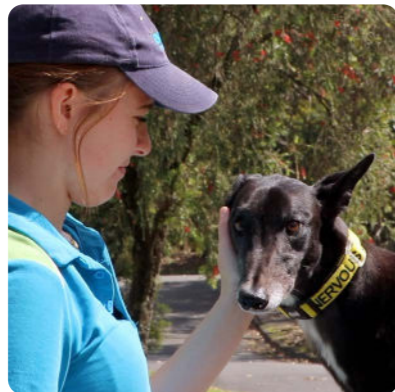
We launched *Keeping Cats Safe at Home*, a joint initiative with the NSW Government and 11 councils, which promotes positive pet ownership and cat containment. To celebrate, we were joined by the Minister for Environment, the Hon James Griffin MP and Minister for Local Government, the Hon Wendy Tuckerman MP, along with cat, wildlife, and environment advocates from around NSW.

Behaviour and Rehabilitation Centre (BARC) to the rescue!

Before arriving in our care, animals have often experienced high levels of stress, trauma, neglect, or abuse. This can lead to behavioural responses that make it challenging for them to be adopted, or adjust to a new home. In October 2021, we dedicated more space and resources to a science-based behaviour rehabilitation program, by transitioning our Central Coast shelter from traditional shelter and adoptions, into a quiet, rehabilitation sanctuary.

By minimising the activity of regular visitors, we created a peaceful, semi-rural environment for the animals. Capacity is capped to ensure that each animal's individual needs are met by our team of highly skilled animal behaviour and rehabilitation trainers.

A core focus at the centre is creating an atmosphere that replicates real-life settings, so the animals can gradually acclimatise to what they are likely to experience when they find their forever homes.



 **456** ANIMALS REHABILITATED

		
364	90	2
CANINES	FELINES	HORSES

“Once we understand their individual needs, we help them build a relationship with their carer or adopter, this becomes the foundation for their rehabilitation. We provide gradual transitions and on-going support to help animals acclimatise to their forever homes.”

– Georgie Caspar, Senior Manager, Animal Behaviour



After spending 236 days at BARC and learning to trust humans again, Cali found her forever home!

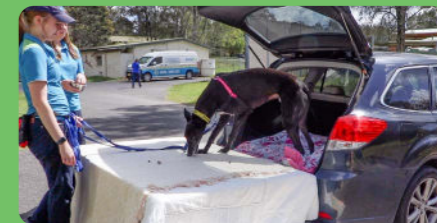
A day in the life of a dog at BARC



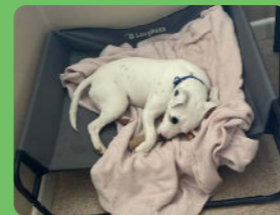
8 A.M.
Sensory walks on site in quiet bushland with a behaviour trainer



11 A.M.
Sessions to build confidence by using their nose to find different scents and food

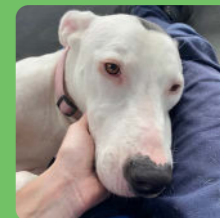
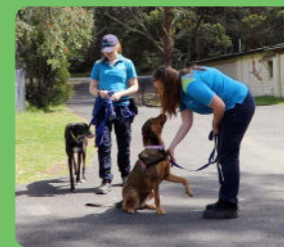


2 P.M.
Life skills sessions with gradual exposure to common sights and sounds like car travel, vet visits, and walks around the neighbourhood



9 A.M.
Office time with a tasty long-lasting chew, comfortable bed, and access to a garden

1 P.M.
Social time with a canine friend in the exercise paddocks



3 P.M.
Quiet time in the kennel with a Kong or lick mat so they can rest and decompress

Helping people help animals

Just like you, we believe pets and people belong together, and that financial circumstances alone are not a reliable indicator of a person's capacity to love and care for their pet. Our outreach programs help address the overpopulation of unwanted companion animals by providing helpful resources and veterinary services such as desexing, microchipping, and vaccinations.

Because of you, we helped 2,361 animals and their owners across 24 communities in need by providing free vital health care including desexing, microchipping, vaccinations and parasite protection.

We couldn't achieve this impact without our volunteer branches and supporter groups, who funded the desexing for 387 animals. Currently, 21 branches and supporter groups around NSW generously donate their time and knowledge to provide localised support and awareness about various animal welfare issues where RSPCA NSW does not have a facility to support the community.



“Every day, our team put the P in RSPCA through preventative measures and early intervention. We know that keeping people and their pets together has a positive impact on the wider community, which is why empowering individuals to effectively care for their animals is so important.”

– Dr Ann-Margret Withers,
Senior Manager,
Outreach Programs



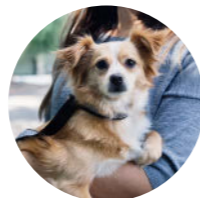
AGED CARE

141 clients
140 animals



HOMELESSNESS

23 clients
23 animals



DOMESTIC VIOLENCE

105 clients
139 animals



EMERGENCY BOARDING

157 clients
221 animals



“With more than 300 volunteers generously donating their time and experience, the dedication of our Volunteer Branches and Supporter Groups to the cause is so inspiring. We couldn't do what we do without their generous support!”

– Jodie Eldridge, Senior Manager, Branches and Volunteers

 **2,361** ANIMALS ASSISTED THROUGH COMMUNITY OUTREACH


 **1,796** PEOPLE RECEIVED VET ASSISTANCE FOR THEIR PETS

 **13** HEALTHY PET DAYS

5 COMMUNITY ANIMAL WELFARE SCHEME INITIATIVES

6 INDIGENOUS COMMUNITY ANIMAL HEALTH PROGRAMS

 **2,609** ATTENDEES AT COMMUNITY OUTREACH INITIATIVES

 **315** ANIMALS OF **209** CLIENTS RECEIVED EMERGENCY TREATMENT

 **991** ANIMALS DESEXED THROUGH BRANCH ASSISTANCE PROGRAMS

 **17** BRANCHES

4 SUPPORTER GROUPS

 **\$244,028** RAISED BY BRANCHES FOR SUBSIDED DESEXING AND VET ASSISTANCE

Being the voice for animals in need

RSPCA NSW continues to have the largest animal welfare enforcement unit in the country. While sadly, we will always see many deliberate acts of cruelty and neglect, that is not always the case. Mental health and homelessness can have a big impact on how animals are cared for, and a large number of our cruelty reports are finalised through providing education and practical support, and referrals to RSPCA NSW programs.

In addition to enforcing the *Prevention of Cruelty to Animals Act* (POCTAA), our inspectors regulate Animal Welfare Codes of Practice and sit on advisory committees. Our inspectors also perform animal rescues and assist other agencies such as Department of Primary Industries, National Parks and Wildlife, Animal Welfare League, NSW Police and Local Councils.

“Unfortunately, the types of animal cruelty offending we are seeing is changing. More deliberate and abhorrent acts of cruelty are being discovered and are significantly more complex to investigate and take longer to finalise.”

– Scott Meyers,
Chief Inspector

IMPRISONMENT FOR MAN WHO KICKED A DOG TO DEATH

After a witness reported a man kicking a dog to death, an RSPCA NSW inspector and council ranger attended a property in Broken Hill to find a Staffordshire terrier deceased in the tray of a utility vehicle.

The defendant admitted to kicking Olaf the dog, who he was temporarily looking after. He stated he did not seek veterinary care because Olaf ‘just started seizing’ and died soon after.

A post mortem examination at our Broken Hill Veterinary Hospital found the cause of death was cardiac muscle haemorrhages, resulting in cardiac arrest. Olaf also had internal bruising in his chest and abdomen.

The 33-year-old plead guilty to aggravated animal cruelty and was handed a nine-month jail term. RSPCA NSW arranged and paid for Olaf’s cremation and returned him to his beloved family.



Photograph of Olaf supplied by his family.



Image: RSPCA NSW Inspectors, Adam, Sarah and Kristie

“Prosecutions can take several years to finalise. In FY22 we commenced 107 prosecutions and finalised 111, including 47 from previous financial years. We still have 15 matters before the court from FY17-21.”

– Kathryn Jurd, General Counsel



Nurturing all creatures, great and small

RSPCA's three veterinary hospitals provide critical services to all the animals in our care, as well as pets in local communities.

Through dedicated care, compassion, and a breadth of expertise, our experienced veterinary teams use state-of-the-art diagnostic and surgical equipment to ensure all animals receive excellent treatment.

Our veterinary team has a large variety of experience including avian, equine, wildlife, small animal, and large animal experts, ensuring we can care for and protect all creatures, great and small.

Diet is critical to providing the highest quality of health care, and in January 2022, we were thrilled to welcome Royal Canin as our National Nutritional Partner. Royal Canin provides food for all cats and dogs in our care, and to date has contributed 40,428kg in product (valued at \$433,107) to NSW shelters.

As well as keeping our animals well-fed and well-nourished, Royal Canin generously came on board as our major sponsor for the 2022 Million Paws Walk. They also share our vision for not only a kinder world for animals, but a cleaner one, and launched a Terracycle recycling program at RSPCA locations to reduce packaging wastage.



Image: RSPCA NSW
Animal Attendant, Ann



\$31.9 M
INVESTED IN
TREATING ANIMALS



28,281
VETERINARY
CONSULTATIONS



6,073
ANIMALS DEXESED



840 MAJOR
SURGERIES



18,722
VACCINATIONS



2,730 X-RAYS



3,514 DENTALS



3,777
ANIMALS MICROCHIPPED



Image: RSPCA NSW Vet,
Dr. Deshaylia Moodley



Image: RSPCA NSW CEO Steve Coleman, General Managers Ursula McGeown, Kristy Blake, and William Beerden, and Chief Inspector, Scott Meyers

Standing up for the animals of NSW

Being a trusted, 150-year-old organisation, RSPCA NSW is often called upon to give advice, guidance, and knowledge on many different topics. Over the last 12 months, we provided subject matter expertise to parliamentary committee inquiries, legislation reviews and animal welfare topics, including:

1. Inquiry into the Approved Charitable Organisations under the *Prevention of Cruelty to Animals Act 1979*
2. Inquiry into Animal Welfare Policy in NSW
3. Select Committee on Puppy Farming in New South Wales
4. Animal Sentience Bill

RSPCA NSW also has representatives on various NSW Government committees, including the Pest Animal Council, Responsible Pet Ownership Group, and Animal Research Review Panel. In order to influence positive animal welfare outcomes, it is important that our organisation, filled with animal welfare expertise, communicates and advocates with as many organisations that manage animals as possible.

It's also vital that we communicate with organisations such as NSW Farmers, Pet Industry Association, and Industry representatives to ensure that where there is human and animal interaction, the animals' needs are met in accordance with the relevant industry code and animal welfare science.

Image on next page: RSPCA NSW Animal Attendant, Tori



“We know animal welfare remains at the forefront of the public consciousness, and we, like you, are committed to the process of modernising and adapting animal welfare regulation and welcome any opportunity to provide comments and subject matter expertise.”

– Steve Coleman, RSPCA NSW CEO

Teaching the next generation of animal welfare advocates that kindness matters

We are proud to be a Registered Training Organisation (RTO Code 70238) that is teaching the next generation of animal welfare advocates by offering an array of accredited and non-accredited courses. These include the qualification ACM20121 Certificate II in Animal Care, and other short courses including Pet First Aid and Microchipping.

Over the last 12 months, 132 students graduated through our RTO, 42 of those being Certificate II Animal Studies graduates. We are proud that 12 graduates went on to secure permanent employment with us.

It's critical that our organisation supports the training and development of members in the veterinary profession. Our veterinary hospitals accept veterinary students for work placement in their final year of study, exposing them to a diverse case load and the disciplines of shelter and forensic medicine. RSPCA NSW veterinary hospitals regularly employ new graduates, mentoring and supporting them through their first year to gain confidence and competence in a range of medical and surgical skills.

 **19** SCHOOL VISITS

 **29** SCHOOL HOLIDAY SESSIONS
253 PARTICIPANTS

 **1,612** CHILDREN REACHED THROUGH EDUCATION INITIATIVES

 **60,736** VISITS TO A.W.A.R.E.* PORTAL
*ANIMAL WELLBEING, AWARENESS, RESPONSIBILITY, EDUCATION

 **147** TEACHERS A.W.A.R.E. REGISTRATIONS

 **468** COURSE ENROLMENTS

 **242** STAFF RECEIVED EXTRA ANIMAL WELFARE TRAINING



“Our vision is to create a community of people who will treat all creatures with kindness and compassion. We believe every person can make a difference in the lives of animals, and that begins by learning about an animal’s welfare and advocating for their care and protection.”

— Adam Farrugia, Senior Manager, Training

Thank you for helping us, help them. You are the real heroes!

The work highlighted in this report was all because of you, our kind and caring animal-lovers, who share our belief that no animal should suffer. Your dreams of a brighter future for animals are at the core of everything we do.

Thank you for your life-saving gifts that provided comfort to 17,691 animals this year. Thank you for helping create a world filled with kindness, empathy, and love for all animals.



75¢
IN EACH DOLLAR GOES TOWARDS IMMEDIATE CARE FOR ANIMALS AND PET OWNERS IN NEED



14¢
IN EACH DOLLAR ENSURES WE HAVE A SUSTAINABLE IMPACT



11¢
IN EACH DOLLAR IS REINVESTED INTO ANIMAL WELFARE INITIATIVES

WHY I GIVE TO RSPCA NSW

Like each of you who care deeply about animals, I am committed to supporting RSPCA NSW in its crusade against cruelty and suffering.

Animal cruelty has been a concern most of my life. As a child I witnessed family pets die agonising deaths at the hands of a neighbourhood animal poisoner. To this day I cannot talk about what happened.

Fortunately, since then public opinion has changed for the better, and there are laws in place to address cruel behaviours.

RSPCA played a big part in effecting this change through its activities in investigating welfare concerns and its advocacy for improvements to legislation. The education programs now being provided by RSPCA NSW are testament to its proactive approach to improving animal welfare in our communities.

I want to be part of that change process and am dedicated to continuing my support of RSPCA NSW to make the world a better place for the animals who share it with us.

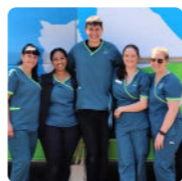
– Beverley Wood,
proud RSPCA NSW supporter

Our corporate supporters

This year we celebrated the 10th anniversary of **Petbarn** as our national Adoption Partner. Over this time, nearly 22,000 animals found their forever homes through Petbarn's 40 stores, and 100% of the adoption fees were donated back to RSPCA NSW to help more animals. Petbarn donated \$197,789 from their annual Tree of Hope campaign, and gave much needed pet supplies to our Community Outreach team and disaster relief to the value of \$161,000. We are so grateful for their support and look forward to the next ten years!



Elanco, our national Animal Health Partner, donates flea, tick, and worming products to provide preventative care to our animals. This year, the value of that support was \$362,165. When NSW experienced major flooding, Elanco supported our disaster relief efforts by supplying parasiticides for affected dog and cat owners.



Our Community Outreach program receives critical support from our friends at **Greencross Vets** Coreen Avenue, who provided countless hours of volunteer support, and free and discounted treatment. Your commitment to your local community is inspiring.



RSPCA's partnership with Hill's Pet Nutrition ended in December 2021. We express our warm thanks for the support of Hill's throughout our 24-year association. During this time, they provided premium food for the cats and dogs in our care, and sponsored events such as Million Paws Walk. We are grateful to Hill's for their consistent and valuable assistance over the years.



5,152
EVENT PARTICIPANTS



71,801
DONORS MADE
309,688
LIFE-SAVING GIFTS



\$48,196,798
RAISED FOR VITAL ANIMAL SHELTER OPERATIONS AND PROSECUTIONS



169
LEGACIES OF LOVE RECEIVED THROUGH GIFTS IN WILLS



159
WORKPLACE GIVING PARTNERS

Doing all we can to give every animal in our care a second chance



Animal welfare is challenging work, both emotionally and physically, and euthanasia is a difficult and confronting reality we face. With animals coming to RSPCA NSW from all sorts of backgrounds, frequently having experienced neglect, trauma and uncertainty, as well as having a variety of medical needs, their welfare is invariably compromised. This means we must make decisions that prioritise their chance of having a life worth living.

This year proved particularly challenging as more dogs came into our care with complex medical and psychological conditions than ever before. Investment in our veterinary and behaviour teams allowed us to support many of these dogs through to rehoming. However, the statistics show that compared to last year, there was a slight increase in dogs we were unable to successfully treat. Despite our teams best efforts, these dogs required euthanasia to end their ongoing suffering.

With our increased investment in preventative and outreach support, we happily saw a reduction of cats and kittens coming in to our shelters, and an increased live release rate. Despite this, the number of cats and kittens coming to us each year remains extremely high, so we rely heavily on our foster carers and staff to rear, treat, and rehabilitate our felines to achieve successful outcomes.

 **17,691** ANIMALS CARED FOR

 **8,137** ANIMALS ADOPTED

 **5,320** CATS & KITTENS

 **1,627** DOGS & PUPPIES

 **48** HORSES  **310** LIVESTOCK

 **832** OTHER ANIMALS*
*POCKET PETS, BIRDS, FISH, FOWLS, & RODENTS

 **1,903** ANIMALS RECLAIMED

 **1,064** FOSTER CARERS **4,170** ANIMALS

 **61** RESCUES REHABILITATED **532** ANIMALS

ANIMAL OUTCOMES

	Rehomed	Still in care	Transferred to council facilities	Transferred [^]	Reclaimed	Died in Care	Other [~]	Euthanised ^o	TOTAL CARED FOR
Felines	5,320	715	5	34	411	161	5	2,494	9,145
Canines	1,627	502	99	236	1,412	36	6	1,169	5,087
Horses	48	76	0	45	1	1	0	5	176
Livestock	310	52	0	50	7	8	0	244	671
Other*	832	92	0	48	72	103	1	926	2,074
Wildlife	0	12	0	119	0	18	1	388	538
TOTAL	8,137	1,449	104	532	1,903	327	13	5,226	17,691

[^] Transferred to rescue groups and other RSPCA states

[~] Stolen, escaped and wildlife released-to-habitat

^o Including animals from RSPCA operated council facilities

* Rodents, guinea pigs, ferrets, rabbits, birds and non-native

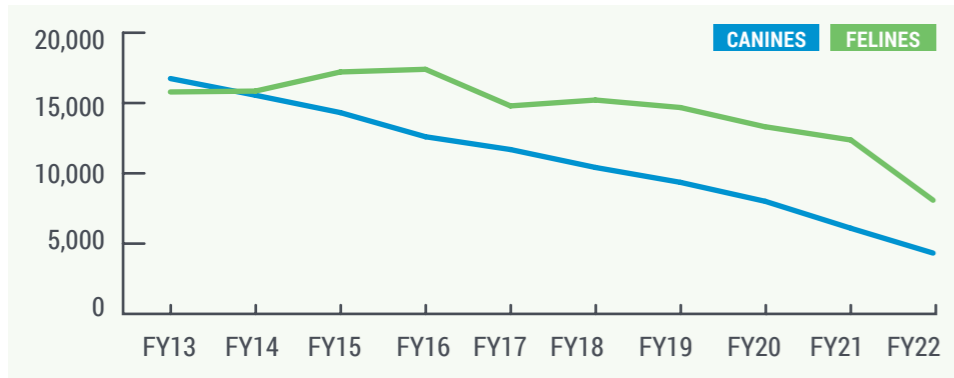
REASONS FOR EUTHANASIA

	Behavioural	Fractious Feline	Infectious	Medical	Legal [†]	Organisational [‡]	TOTAL
Felines	561	483	381	830	0	239	2,494
Canines	911	0	0	226	32	0	1,169
Horses	0	0	0	5	0	0	5
Livestock	51	0	59	63	0	71	244
Other*	67	0	53	537	243	26	926
Wildlife	0	0	46	342	0	0	388
TOTAL	1,590	483	539	2,003	275	336	5,226

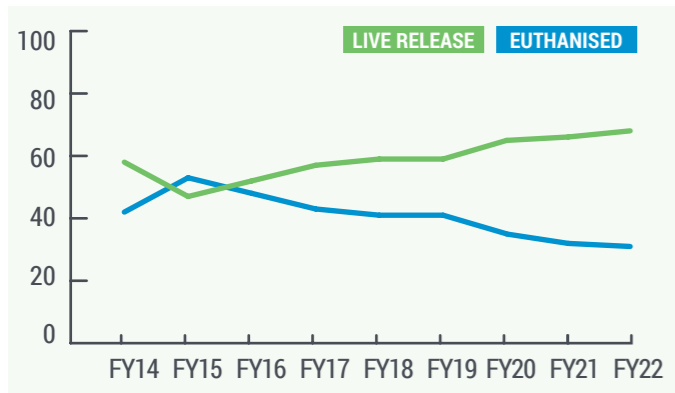
[†] Deemed dangerous or menacing by local council

[‡] Unweaned or too young to survive without their mother

INCOMING ANIMALS



FELINE OUTCOMES (%)



CANINE OUTCOMES (%)

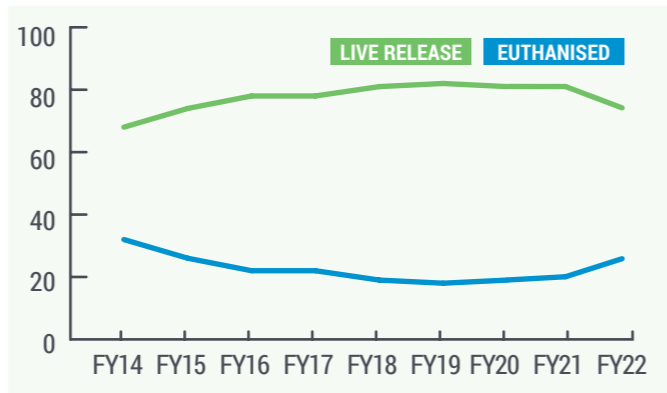


Image: RSPCA NSW
Animal Attendant, Matt





THEIR LOVE FOR ANIMALS LIVES ON

Pat's Promise

This year the animals lost a great friend with the passing of Patricia Gannon. Pat's immense love for animals defined her life. Nearly 70 years ago, she and her late husband were founding members of an RSPCA branch at Woy Woy, and Pat truly lived by the promise to help all creatures, great and small. She was known to take in any animal that needed care, anything from a cat, dog, or donkey - to even a spider!

When Pat included a gift in her Will to RSPCA NSW, she wanted to promise that she would always be there to help the animals. She knew her gift would continue to love and protect animals, and even though she would be gone, she knew there would be brave people to rescue them and find them homes.

Pat's gift is helping animals in the Illawarra and south coast area of NSW, where she made her home for decades. Now, although Pat herself cannot be there help any animal in need she comes across, she has ensured that RSPCA can be.

Thank you, Pat.



Remembering Ron

Ron Woodham, former Corrective Services NSW Commissioner, served the New South Wales community for 46 years and was an instrumental part of launching the RSPCA NSW Pet Rehabilitation Program at the John Morony Correctional Centre in 2010.

Ron Woodham will be remembered by all who met him, and his animal-loving legacy will live on through the dog rehabilitation program. Over the past decade, close to 1,400 dogs and 150 inmates have found hope, thanks to the partnership he helped build.

Ron will be sorely missed by everyone at RSPCA NSW.



Photographer credit: Daily Telegraph. Ron Woodham at the Emu Plains Correctional Centre with Ronnie the pup.

MEOW, WOOF, NEIGH, BAA, OINK, CHIRP, SQUEAK, MOO,
CLUCK, BLEAT, SQUEAK, COCK-A-DOODLE-DO, QUACK...

Thank you!



PETBARN

