

# PAVING A STRONGER FUTURE FOR PEOPLE AND ANIMALS

RSPCA NSW Strategic Plan | FY 24-26



**KEEPING PEOPLE AND THEIR PETS TOGETHER**



**STRENGTHEN OUR SHELTER NETWORK**



**ENHANCE ACCESS TO VET CARE**



**ROBUST INVOLVEMENT IN DISASTER RELIEF**



**IMPROVE ANIMAL WELFARE POLICY AND REGULATION**



**OPTIMISE ALLOCATION OF RESOURCES TO ANIMALS MOST IN NEED**



**INCREASE YOUNG PEOPLE'S CONNECTION TO ANIMALS AND THEIR WELFARE**



**INCREASE INSPECTORATE ACTIVITY**



**EMPOWER AND EDUCATE COMMUNITIES**



**ONE TEAM, ONE MISSION**



**INCREASE INSPECTORATE ACTIVITY**

We will **enhance animal welfare by increasing the number of inspectors in the field**, improving response times to cruelty complaints and increase the support provided to people and their pets.



**ENHANCE ACCESS TO VET CARE**

We will **provide alternative ways through which the community can access pet health services**, ensuring increased accessibility and affordability for pet owners.



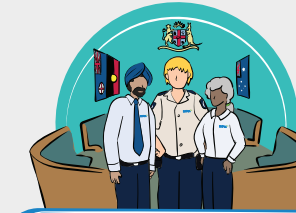
**ROBUST INVOLVEMENT IN DISASTER RELIEF**

We will **efficiently respond during times of disaster** and increase the support we provide to both people and animals.



**KEEPING PEOPLE AND THEIR PETS TOGETHER**

We will build a **comprehensive social safety net of services** to support and enable people and their pets to stay together during times of hardship and crisis.



**IMPROVE ANIMAL WELFARE POLICY AND REGULATION**

We will **improve animal welfare regulation and policies**, working towards securing impactful and positive regulatory changes that benefit the animals of NSW.



**STRENGTHEN OUR SHELTER NETWORK**

We will **operate a modern and innovative shelter network** that will provide positive and enriched animal welfare outcomes.



**INCREASE YOUNG PEOPLE'S CONNECTION TO ANIMALS AND THEIR WELFARE**

We will **actively engage young people** through digital platforms and in-person interactions to create the next generation of animal advocates.



**EMPOWER AND EDUCATE COMMUNITIES**

We will expand our reach by providing **opportunities for people to access our training and education resources**; as well as continuing to build the capacity of our member and volunteer groups to deliver valuable programs.



**OPTIMISE ALLOCATION OF RESOURCES TO ANIMALS MOST IN NEED**

We will **apply demand-led resource allocation** to direct our efforts to those people and animals most in need, resulting in more effective and targeted service delivery that better serves communities.



**ONE TEAM, ONE MISSION**

We will focus on fostering a **"One Team, One Mission"** culture, implementing communication initiatives to further engage staff and volunteers.



**FOCUS ON DIVERSITY AND INCLUSION**

We will continue to actively consider and **promote diversity and inclusion** across our organisation.



**FOSTER RELATIONSHIPS WITH AGENCIES AND PARTNERS**

We will actively develop and foster **strong relationships with agencies and partners**, working collaboratively to ensure the well-being of animals and people in need.



**ADVANCE SHELTER MEDICINE**

We will have a **strong focus on the physical and behavioural wellness of all animals in our care** and continually invest in the care of our shelter animal population.



**TECHNOLOGICAL INNOVATION**

We will utilise and **invest in technology innovation** to enhance our service delivery and efficiency.



**INSTIL A CULTURE OF CONTINUOUS LEARNING**

We will **provide a wide variety of quality training programs**, enabling better delivery of services for animals and communities.



**REDUCE OVER-POPULATION OF CATS**

We will **reduce cat over-population** and encourage positive behavioural change towards our feline companions in homes and the community.



**MODERNISE THE VOLUNTEERING FRAMEWORK**

We will **further enhance our volunteering programs** by creating more opportunities for volunteer-driven initiatives to expand our positive animal impacts across the state.



**CONTRIBUTE TO A GREENER ENVIRONMENT**

By implementing initiatives to minimise our impact on the environment, we will actively **contribute to a greener environment** and reduce our carbon footprint.



**ENSURE FINANCIAL SUSTAINABILITY**

We will continue to manage our assets and resources in a **financially and ethically responsible way** to support the animals and people of NSW.